

BRUNTON

RESIDENTIAL



WISTERIA PLACE, GREAT PARK, NE13

Offers Over £150,000

BRUNTON

RESIDENTIAL





BRUNTON

RESIDENTIAL



BRUNTON

RESIDENTIAL



Modern two bedroom first floor apartment, situated within Wisteria Place in the popular residential development of Great Park, on the outskirts of Newcastle upon Tyne. The property offers well designed contemporary accommodation within a well regarded and increasingly sought after location.

The accommodation comprises an open plan kitchen, living and dining area, designed to maximise space and natural light, along with two well proportioned bedrooms and a modern family bathroom. The layout is ideally suited to modern living.

Wisteria Place lies within the heart of Great Park, which offers a range of local amenities including shops, cafés, and green open spaces. The area is well served by schooling for all age groups and benefits from excellent transport links, with convenient road access to the A1 and A19, and public transport connections providing easy access into Newcastle city centre and the wider Tyne and Wear region.

BRUNTON

RESIDENTIAL



BRUNTON

RESIDENTIAL

The internal accommodation comprises: a welcoming entrance hallway, which provides access to all the main areas of the home. To the right is a generous open plan kitchen, living and dining space, creating a bright and sociable heart to the property. The modern kitchen is well equipped with integral appliances, including an oven, hob, and extractor fan. The kitchen also benefits from an ample range of wall and base units, providing excellent storage and workspace. French doors open onto a Juliet balcony, allowing an abundance of natural light to flow into the room.

To the left of the hallway are two well proportioned bedrooms, with the principal bedroom benefiting from a dedicated dressing area. Positioned at the end of the hallway is a well appointed family bathroom, fitted with a WC, washbasin, and a bath.



BRUNTON

RESIDENTIAL

TENURE : Leasehold

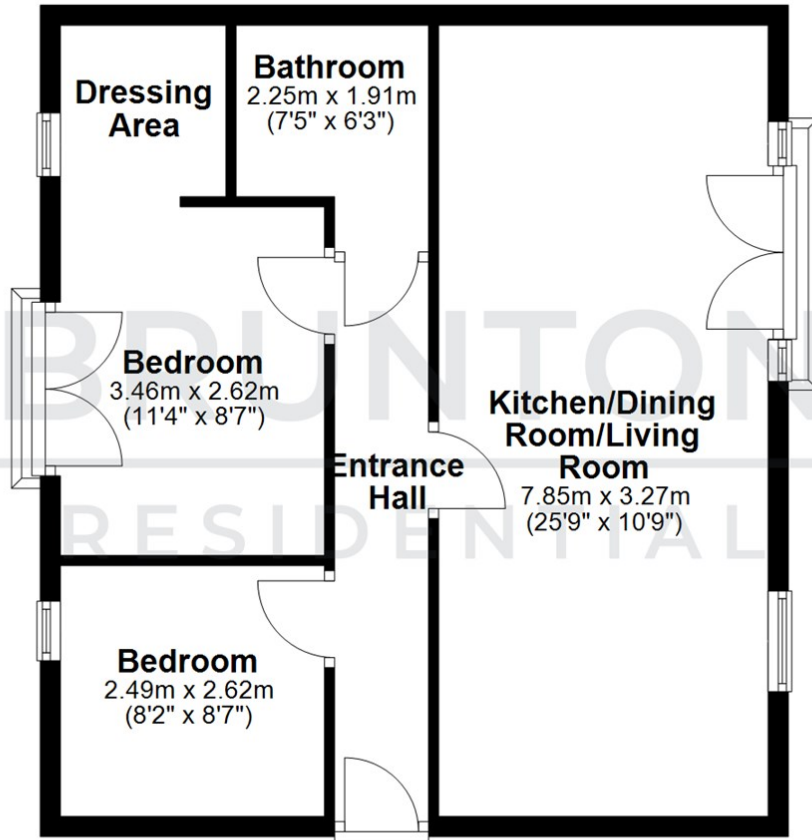
LOCAL AUTHORITY : Newcastle CC

COUNCIL TAX BAND : B

EPC RATING : B

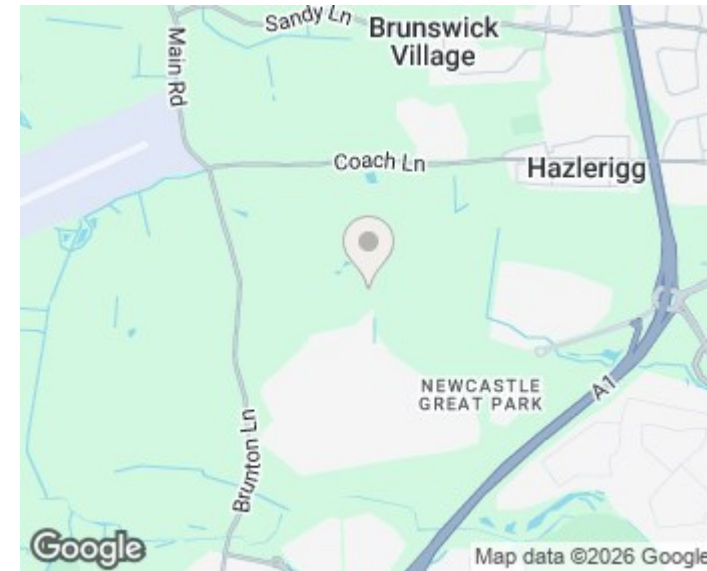
First Floor

Approx. 55.1 sq. metres (593.4 sq. feet)



Total area: approx. 55.1 sq. metres (593.4 sq. feet)

All measurements are approximate and are for illustration only.
Plan produced using PlanUp.



Energy Efficiency Rating		Current	Potential
Very energy efficient - lower running costs			
(92 plus) A			
(81-91) B		84	84
(69-80) C			
(55-68) D			
(39-54) E			
(21-38) F			
(1-20) G			
Not energy efficient - higher running costs			
England & Wales		EU Directive 2002/91/EC	

Environmental Impact (CO ₂) Rating		Current	Potential
Very environmentally friendly - lower CO ₂ emissions			
(92 plus) A			
(81-91) B			
(69-80) C			
(55-68) D			
(39-54) E			
(21-38) F			
(1-20) G			
Not environmentally friendly - higher CO ₂ emissions			
England & Wales		EU Directive 2002/91/EC	